

LEGEND

- [W190] 190mm CONCRETE BLOCK WALL, CORE FILLED
- [W191] 190mm CONCRETE BLOCK WALL, CORE FILLED WITH ALUCOBOND COMPOSITE PANEL CLADDING ON PROPRRIETRY EXISTING STRUCTURE
- [W192] 190mm CONCRETE BLOCK WALL, CORE FILLED WITH ALUCOBOND COMPOSITE PANEL CLADDING ON PROPRRIETRY EXISTING STRUCTURE ON EXTERIOR, 13mm PLASTERBOARD LINING DIRECTLY ADHERED DIRECTLY TO BLOCKWORK ON INTERIOR
- [W193] 190mm CONCRETE BLOCK WALL, CORE FILLED WITH 13mm PLASTERBOARD LINING DIRECTLY ADHERED DIRECTLY TO BLOCKWORK ON INTERIOR
- [W400] 64mm STEEL STUD FRAMED WALL WITH ACOUSTIC INSULATION TO SPEC, 2 x 13mm PLASTERBOARD LINING ON ONE SIDE, COLOUR TO SPEC, WALL TILES TO SPEC ON WATERPROOF MEMBRANE ON 6mm FIBRE CEMENT SHEETING
- [W401] 64mm STEEL STUD FRAMED WALL WITH ACOUSTIC INSULATION TO SPEC, 2 x 16mm FIRE RATED PLASTERBOARD INTERNAL LINING ON BOTH SIDES OF STUDS, PAINT FINISH, COLOUR TO SPEC
- [W402] 64mm STEEL STUD FRAMED WALL WITH ACOUSTIC INSULATION TO SPEC, 2 x 13mm PLASTERBOARD INTERNAL LINING ON BOTH SIDES OF STUDS, PAINT FINISH, COLOUR TO SPEC
- [W403] 64mm STEEL STUD FRAMED WALL WITH ACOUSTIC INSULATION TO SPEC, WALL TILES TO SPEC ON WATERPROOF MEMBRANE ON 6mm FIBRE CEMENT SHEETING, BOTH SIDES.

NOTES

- PATCH AND REPAIR CRACKS <1mm TO EXISTING BEAMS, COLUMNS AND SLAB EDGE TO FACADES OF THE BUILDING.
- FIRE SERVICES ARE TO BE UPGRADED TO COMPLY WITH THE BCA, REFER TO BUILDING SERVICES ENGINEERS SPECIFICATIONS.
- EXISTING MECHANICAL SWITCHBOARD TO BE UPGRADED.
- TOILET PANS AND CISTERNS TO BE REPLACED WITH LOW FLOW DUAL FLUSH CISTERNS AND NEW VITREOUS CHINA PANS. REFER TO FINISHES AND FIXTURES SCHEDULE.
- CARPARK TO HAVE NEW LINE MARKINGS TO LOCATE SPACES, INCLUDING ONE DISABLED CARPARKING SPACE.

Rev	Date	Description	By	App
C5	04-07-11	ALL AMENDMENTS SINCE TENDER STAGE AS CLOUDED FOR CONTRACTOR	SH	SH
C4	19-06-11	AMENDMENTS AS CLOUDED	SH	SH
C3	19-06-11	AMENDMENTS AS CLOUDED	SH	SH
C2	09-04-11	AMENDMENTS AS CLOUDED	SH	SH
C1	29-03-11	BUILD FOR CONSTRUCTION	SH	SH

ARTAS ARCHITECTS
 ARCHITECTURE
 PLANNING
 INTERIORS
 Sydney
 Suite 402
 410 Elizabeth Street
 Surry Hills NSW 2010
 T 02 9211 9669
 F 02 9211 9665
 Internet www.artas.com.au
 e-mail sydney@artas.com.au

NSW GOVERNMENT Land & Property Management Authority
 State Property Authority

UGL Services

Project Title

GREY & FERGUSON STREETS, GLENN INNES

Drawing Title

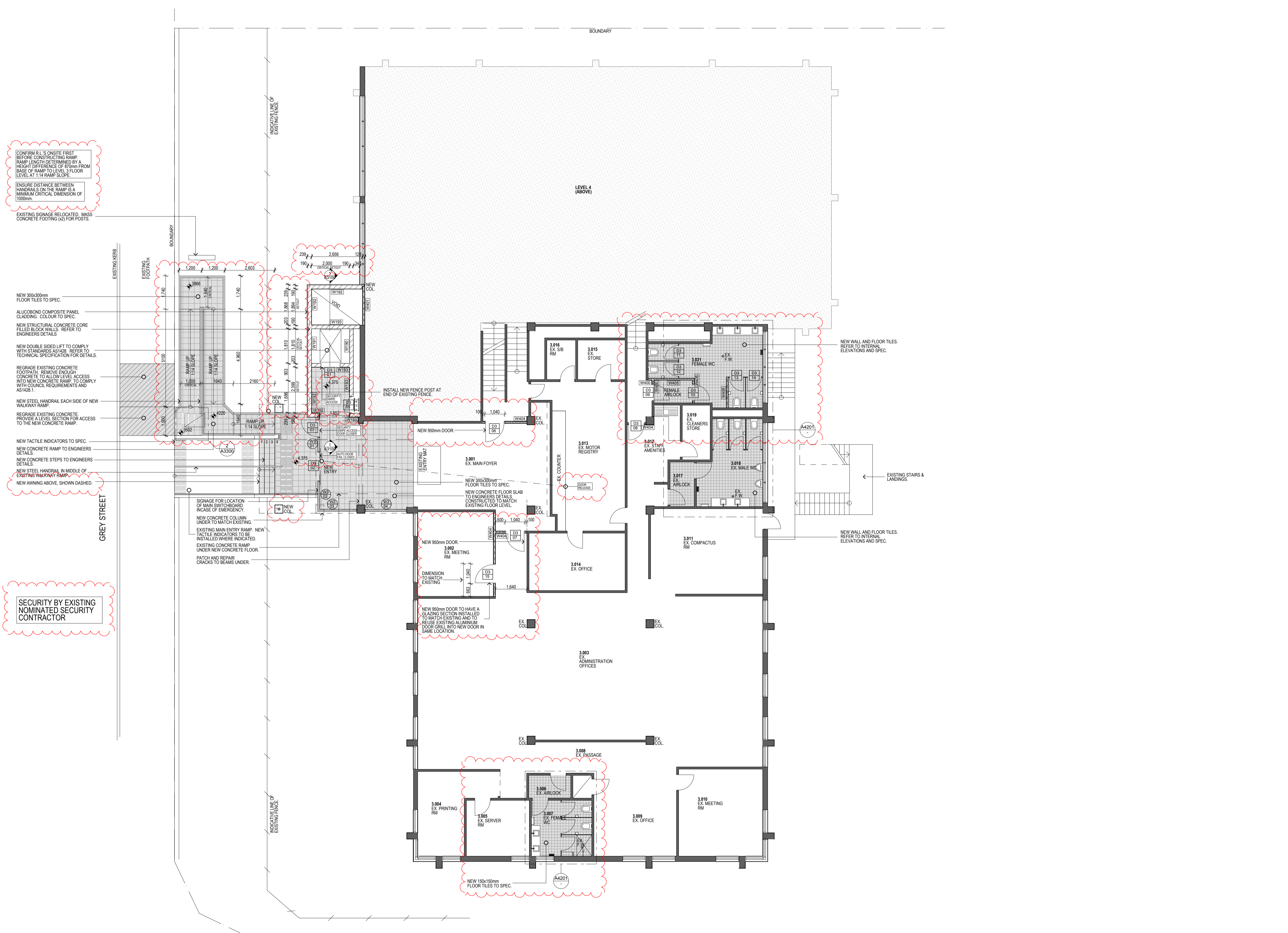
LEVEL 3 FLOOR PLAN

Plot Date	Approved	Drawn	Scale
04/07/2011	HM	JB	N/A

Project Number: **102050** Drawing Number: **A1202/C6** Sheet Number: **N/A**

CONSTRUCTION

Use figured dimensions in preference to scaled dimensions. All dimensions to be verified on site.
 COPYRIGHT: These drawings and designs and the copyright there of are the property of Artas Architects and must not be used, retained or copied without the written permission of Artas Architects. (a.b.n. 35 650 405 963)



CONFIRM R.L.'S ON SITE FIRST BEFORE CONSTRUCTING RAMP. RAMP LENGTH DETERMINED BY A HEIGHT DIFFERENCE OF 870mm FROM BASE OF RAMP TO LEVEL 3 FLOOR LEVEL AT 1:14 RAMP SLOPE.

ENSURE DISTANCE BETWEEN HANDRAILS ON THE RAMP IS A MINIMUM CRITICAL DIMENSION OF 1000mm.

EXISTING SIGNAGE RELOCATED. MASS CONCRETE FOOTING (X2) FOR POSTS.

NEW 300x300mm FLOOR TILES TO SPEC.

ALUCOBOND COMPOSITE PANEL CLADDING. COLOUR TO SPEC.

NEW STRUCTURAL CONCRETE CORE FILLED BLOCK WALLS. REFER TO ENGINEERS DETAILS.

NEW DOUBLE SIDED LIFT TO COMPLY WITH STANDARDS AS1428. REFER TO TECHNICAL SPECIFICATION FOR DETAILS.

REGRADE EXISTING CONCRETE FOOTPATH. REMOVE ENOUGH CONCRETE TO ALLOW LEVEL ACCESS INTO NEW CONCRETE RAMP TO COMPLY WITH COUNCIL REQUIREMENTS AND AS1428.1.

NEW STEEL HANDRAIL EACH SIDE OF NEW WALKWAY RAMP.

REGRADE EXISTING CONCRETE PROVIDE LEVEL SECTION FOR ACCESS TO THE NEW CONCRETE RAMP.

NEW TACTILE INDICATORS TO SPEC.

NEW CONCRETE RAMP TO ENGINEERS DETAILS.

NEW CONCRETE STEPS TO ENGINEERS DETAILS.

NEW STEEL HANDRAIL IN MIDDLE OF EXISTING WALKWAY RAMP.

NEW WINNING ABOVE, SHOWN DASHED.

SECURITY BY EXISTING NOMINATED SECURITY CONTRACTOR

LEVEL 3 FLOOR PLAN
 SCALE 1:100